

# SHOVEL READY SITES



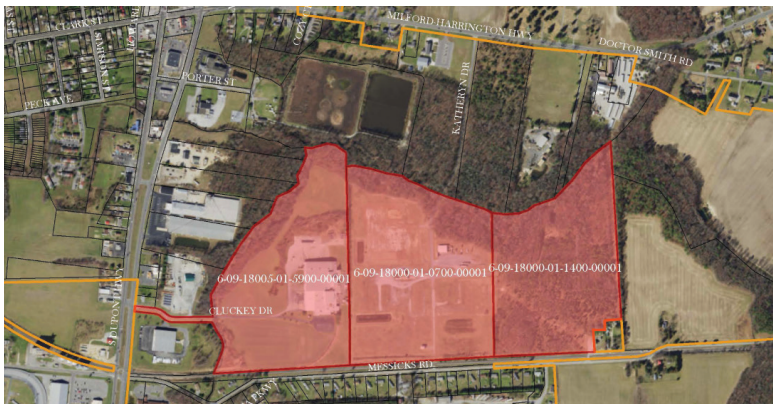
**DOVER** - Over 100 ac



**MILFORD** - 23.62 ac



**SMYRNA** - 206 ac



**HARRINGTON** - 130 ac; Bldg 100,000 sf



**NO SALES TAX**  
**Developable Within One Year**  
**Low Land Cost**  
**Low Property Taxes**  
**No Red Tape**  
**Incentive Programs**



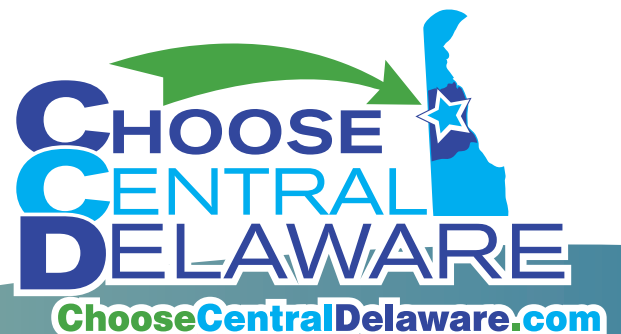
**Access to Rail**



**Located Less Than 1 Days Drive of 60% of the US Population**



**Located Within 3 Hours of 4 Major Cities**



for more info: **302-678-3057**  
[Lparkowski@ccded.com](mailto:Lparkowski@ccded.com)